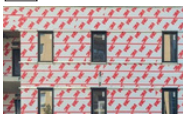


3m Air and Vapor Barriers



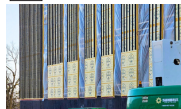
3M

façadesX

envelope solutions

203-816-5600 | www.facadesx.com

Ex FRP Girts



exo girt

Ro Structural Insulated Sheathing



ROK-ON®
Roofing Systems

G Wood-Plastic Composite Cladding



Geolam®
Architectural Eco-Technology

K High-Density Fiber Cement



KØL®
High-Density Fiber Cement

C Fiber Cement



CERACLAD

Sb Aluminum Composite Panels



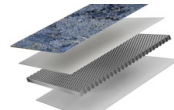
STACBOND

T Terracotta



TONALITY®
NATURAL FAÇADES

Ts Lightweight Honeycomb Stone Panels



TRIMSTONE
LIGHTWEIGHT STONE SYSTEM

Bo Architectural Metal Systems



BOK®
MODERN

Gv Ventilated Porcelain Facade Systems



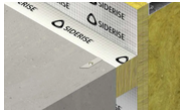
Gv FACADES
ARCHITECTURAL SYSTEMS

Ml Light Gauge Metal Framing Panels



METALLEVE
WALL SYSTEMS

Sr Firestop Solutions



SIDERISE®

B Insulated Metal Panels



BRUCHA

Tw Thermally Modified Wood



THERMALWOOD
CANADA

A uPVC + ALU Windows/Doors



AMBERLINE

L High-Performance Skylights



LAMILUX

U Magnesium Oxide Cement Panels



US MgO

f(x)

Principals:

Matt Capone - mattefacadesx.com
Gustavo Mendonca - gustavo@facadesx.com

Technical Sales Representatives:

Michael Banas - mike@facadesx.com
Justin Chandler - justin@facadesx.com

Project Manager:

Noah Grubler - noah@facadesx.com